



GAT MONTHLY MEMBERSHIP PROGRESS REPORT

Results as of: 11/30/2022

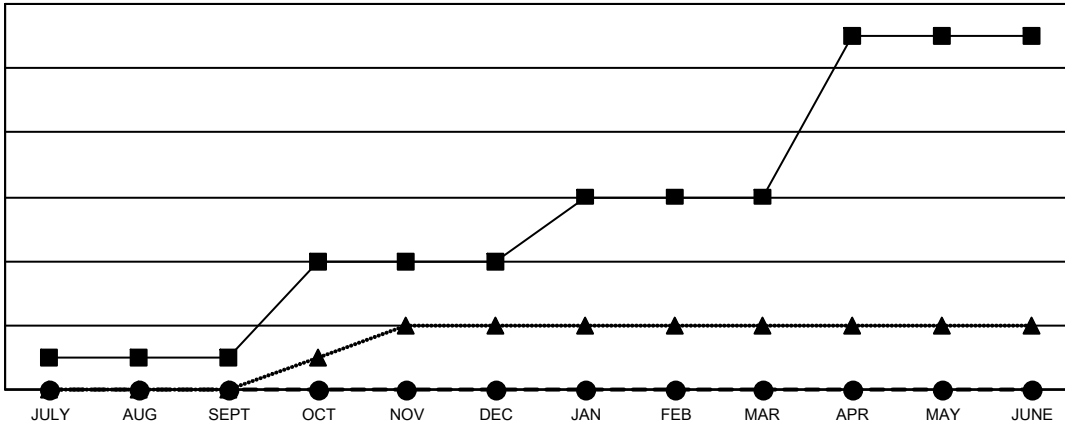
Multiple District 105

LOCATION: ENGLAND

Clubs			
RESULTS FOR 2022-2023			
QUARTER	NEW CLUB GOAL	NEW CLUBS	DROPPED CLUBS
JULY/AUG/SEPT	1	0	6
OCT/NOV/DEC	3	0	2
JAN/FEB/MAR	2	0	0
APR/MAY/JUNE	5	0	0

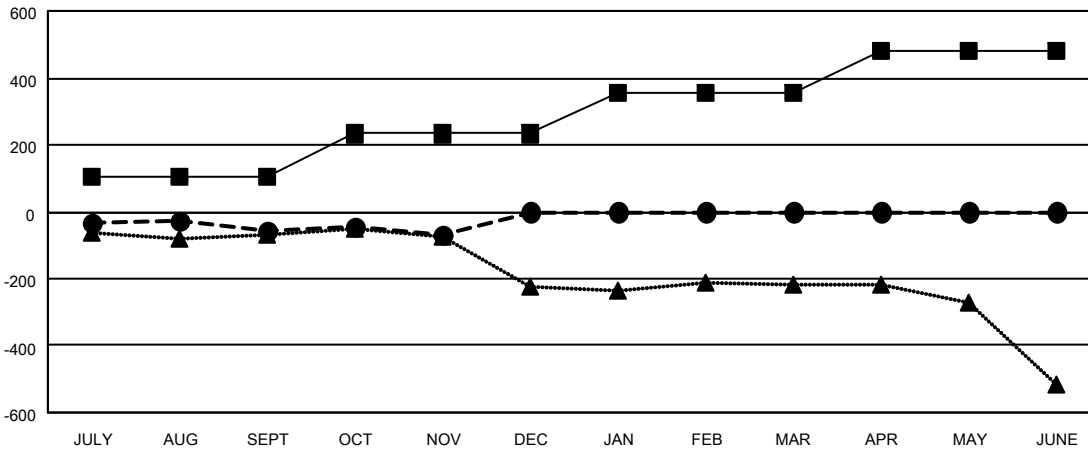
Members			
RESULTS FOR 2022-2023			
QUARTER	MEMBER GROWTH NET GOAL	MEMBER GROWTH ACTUAL	DROPPED MEMBERS ACTUAL (including transfers)
JULY/AUG/SEPT	104	244	269
OCT/NOV/DEC	129	203	179
JAN/FEB/MAR	122	0	0
APR/MAY/JUNE	127	0	0

GOALS AND ACTUAL NEW CLUBS CUMULATIVE



- CURRENT YEAR GOALS FOR NEW CLUBS
- CURRENT YEAR ACTUAL NEW CLUBS
- ▲- LAST YEAR ACTUAL NEW CLUBS

GOALS AND ACTUAL MEMBERS CUMULATIVE



- MEMBER GROWTH NET GOAL
- MEMBER GROWTH ACTUAL
- ▲- LAST YEAR MEMBERSHIP ACTUAL

DROPPED CLUBS: 8	
DROPPED MEMBERS	
DECEASED	65
CLUB CANCELLED	0
OTHER	383
TOTAL	448

199 CLUBS OF 574 ADDED 1 OR MORE NEW MEMBERS

[CLICK HERE FOR CUMULATIVE MEMBERSHIP DATA](#)

GENDER DISTRIBUTION	
MALE	6,961 (70.16%)
FEMALE	2,959 (29.83%)
NON BINARY	1 (0.01%)
PREFER NOT TO ANSWER	0 (0.00%)
TOTAL FAMILY UNIT MEMBERS	1,326
FAMILY MEMBERS PAYING HALF DUES	675